

SCENES Community Platform - User Guide

A bit about SCENES



- **SCENES** is a platform designed to bring the Peerplays community together by providing a central hub for users to connect and engage with each other. It aims to provide a diverse range of features and services to help facilitate interaction and collaboration among its users, such as forums for discussion, social media-style profiles and feeds, and various tools for content creation and sharing.
- The goal of **SCENES** is to provide a centralized hub where Peerplays community members can connect with each other, share information and ideas, and work together to drive the continued development and growth of the Peerplays platform. The platform is designed to be user-friendly, accessible, and easy to use, so that anyone can participate and get involved, regardless of their technical background or experience level.
- Whether you're a seasoned Peerplays user, a new member of the community, or just someone who is interested in learning more about the platform, **SCENES** provides a welcoming and supportive environment for you to get involved and make a positive impact.

Registration and Logging in



- **SCENES** provides users with several convenient options for logging in to the platform. Each of the four methods has its own unique benefits and is designed to meet the different needs of users:
 - Peerplays Single Sign-On
 - Google Sign-in
 - Apple ID Sign-in
 - SCENES-specific credentials
- **Peerplays Single Sign-On (Peerplays SSO)**: This is the recommended method for logging in to **SCENES** and is the most streamlined and secure option. If you already have a Peerplays SSO, you can use it to log in to **SCENES**, as well as any other platform that is built by or on Peerplays. This not only makes it easier for you to access multiple platforms with a single set of credentials, but it also helps to protect your personal information and data.
- **Google account sign-in**: This allows you to use your existing Google credentials to sign up or log in to **SCENES**. This is a quick and easy option that saves you time by eliminating the need to create a new set of credentials just for **SCENES**.

Registration and Logging in (cont)



- **Apple ID account sign-in:** Similar to the Google option, this allows you to use your existing Apple credentials to sign up or log in to **SCENES**, providing you with a fast and convenient method for accessing the platform.
- **SCENES-specific credentials account sign-in:** If none of the above options are available to you, you can create a set of login credentials that are specific to **SCENES** only. This option provides a level of security and privacy and is perfect for those who prefer not to use their Google or Apple accounts to log in to online platforms.
- In conclusion, each of these four methods provides users with a convenient and secure way to log in to **SCENES**. Whether you prefer to use your existing Google or Apple credentials, or prefer to create a set of **SCENES**-specific credentials, the platform provides options to meet your unique needs.

SCENES Channels



- In **SCENES**, forums, video and chat rooms are referred to as "channels". Channels serve as the primary means for users to engage with each other on **SCENES**. They provide a space for discussion, sharing of ideas and information, and collaboration on projects and initiatives related to Peerplays. Four essential channel types are utilized in this platform:
- **STAGE:** This channel serves as a platform to host live events, such as webinars, discussions, and the like. Up to four individuals with video capabilities can participate, while an unlimited number of users can join with audio only. To observe an event, simply click on the desired stage and watch it unfold. If you wish to become a speaker, simply raise your hand, click the hand icon, and grant access to your microphone and camera.
- **CHAT:** This channel is where community members can communicate with each other, similar to a Whatsapp group. You can reply to messages, tag specific users, send important links, Gifs, and have community administrators pin relevant messages for all to see.

SCENES Channels (cont)



- **FORUM:** This channel provides a space for members to discuss topics, share updates, request feedback, seek help, or voice their opinions on anything of interest to others. It functions like a feed or wall of announcements.
- **CALENDAR:** This channel displays all live events and updates on upcoming meetings and webinars. It serves as a simple calendar for keeping track of what's happening and its features are purely focused on scheduling.

Roles & Permissions



- Roles play an important role in defining an individual's level of access and permissions within SCENES and determine what channels and resources an individual can access and participate in. There are four main roles within the system:
 - Administrator
 - Developer
 - Marketer
 - Member
- **ADMINISTRATOR:** the admin role is set aside for leaders and community managers. Administrators are responsible for moderation and channel creation, ensuring that the system remains organized and running smoothly. They have the ability to create and manage channels, regulate content and activities, and enforce rules and policies to maintain a productive and safe environment.
- **DEVELOPER:** The third role is "developer," which is intended for members of the development team. Developers are given the ability to participate in dev scrums without having to seek permission from administrators, allowing them to collaborate effectively with their team and stay on top of their projects.

Roles & Permissions (cont)



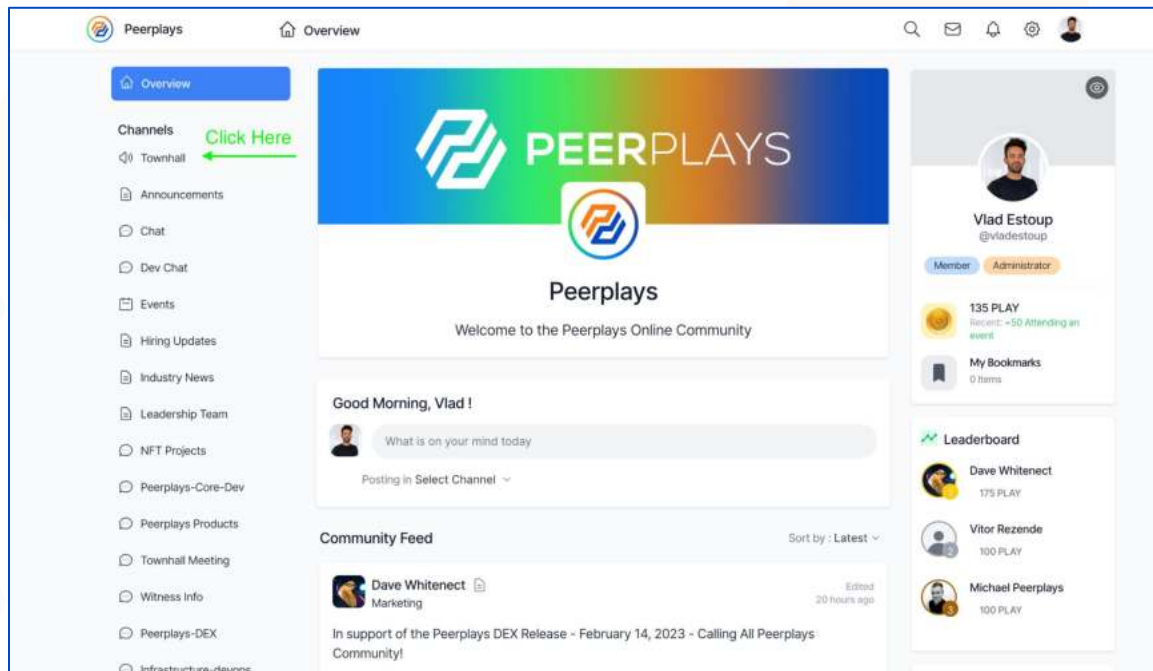
- **MEMBER:** the basic role that everyone who is part of the SCENES is assigned to. Members are provided with a set of default permissions and access to resources that are common to all members.
- **MARKETER:** reserved for individuals who are part of the marketing team. Marketers are given access to internal channels that are specifically designed for the marketing team, allowing them to collaborate on projects, share ideas and information, and stay up-to-date with the latest developments in their field.

Joining Meetings

Congratulations, you are invited to join a meeting on SCENES! Meetings are held on a **STAGE**.

For the Peerplays Weekly Town Hall, it will be in the **TOWNHALL** stage, on the top left of the channels list.

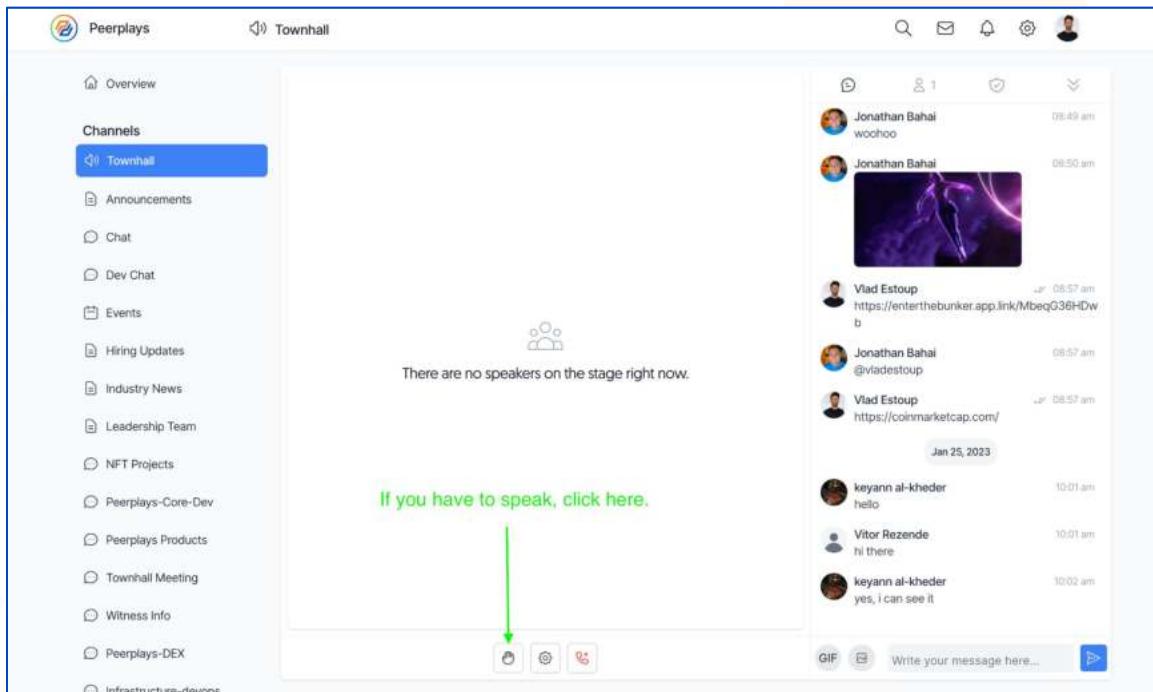
You will have to click on it to access your scheduled event! If you are just watching the Townhall and do not wish to speak, you can stop there!



Meeting Participation

If you are going to present (or simply ask questions), you will have to raise your hand in order to speak.

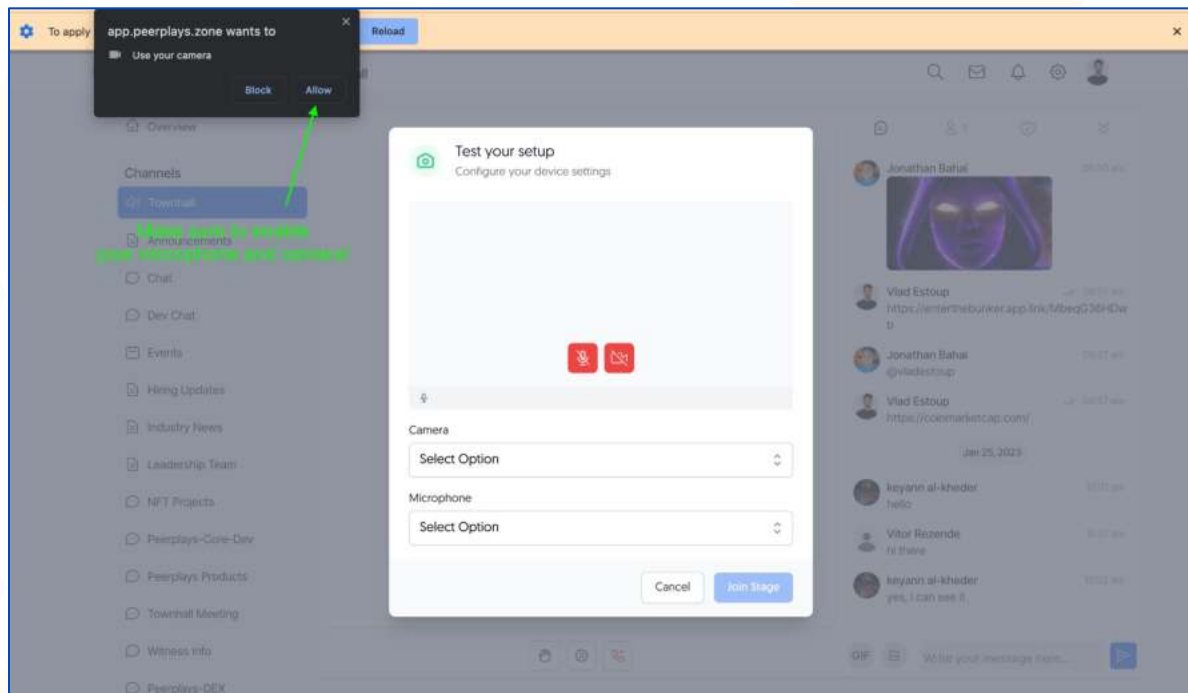
You do this by simply clicking on the hand icon at the bottom of the screen.



Mic & Camera Activation

Once you have clicked on the hand icon, you will be prompted to enable microphone and camera access.

Please ensure that you allow access in order to participate!

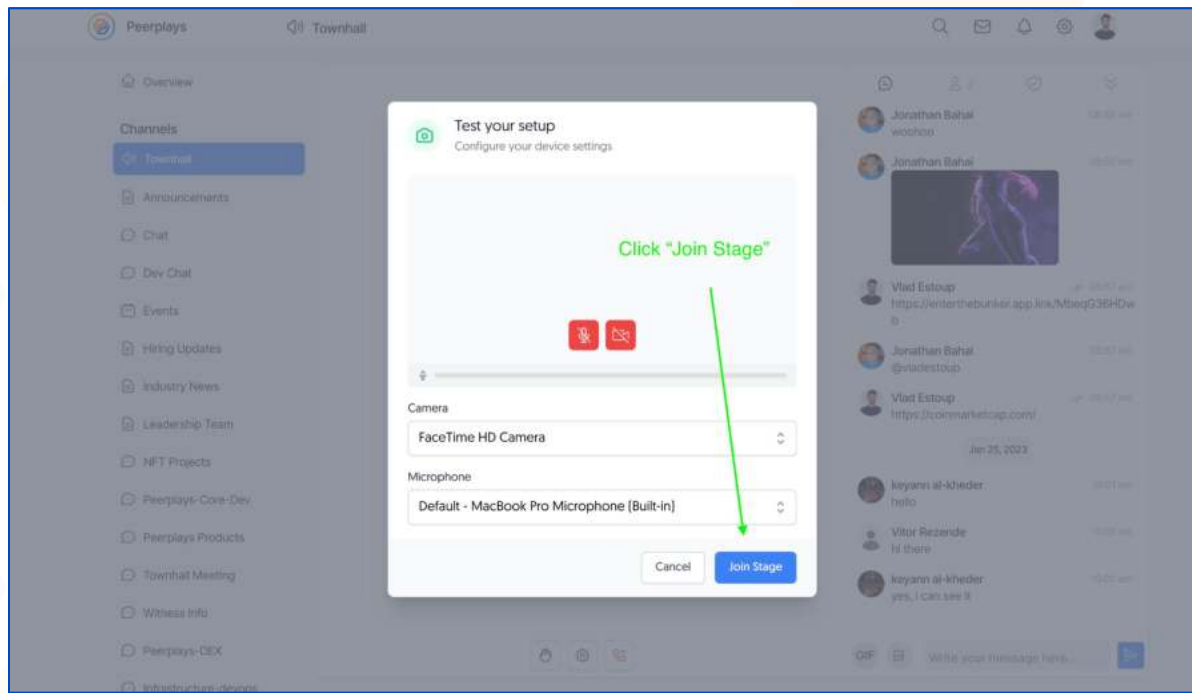


Join STAGE

Once you have allowed both microphone and camera access, you will have to click on the **JOIN STAGE** blue button!

That is it! You have successfully joined the stage.

If you are a regular presenter, you will not need to request for permission when accessing the **TOWNHALL** stage.

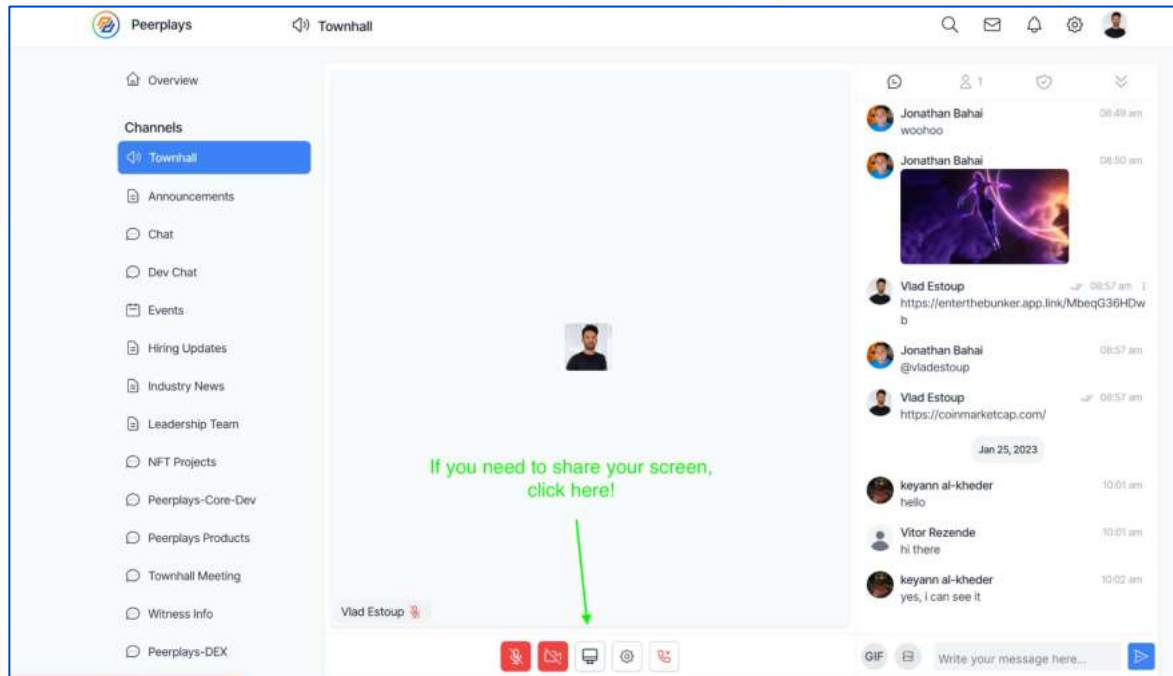


Presenting Your Screen

If you wish to share your screen, simply click on the screen icon at the bottom of the screen

You will then be prompted to share a tab, your window, or the entire screen.

And that is all! We hope you enjoy your SCENES event.



Thank You

Vlad Estoup
Peerplays Community Manager
vestoup@peerplays.com